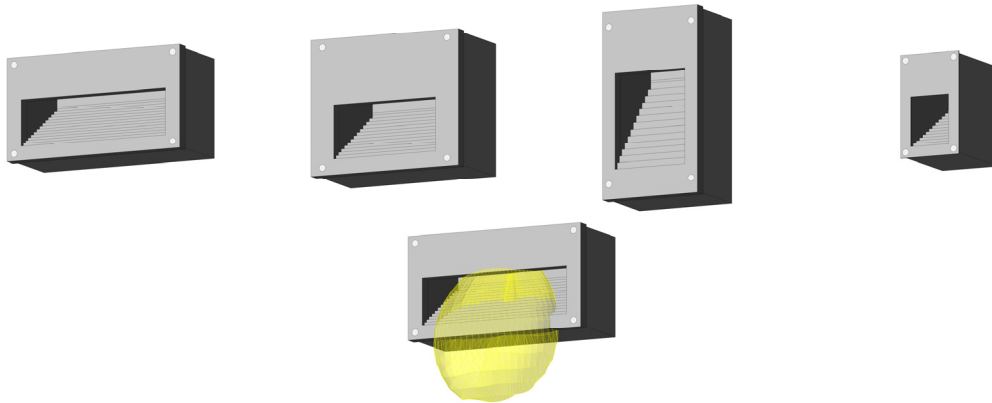


## Revit Component Information Sheet

### Verso Lighting Family



Manufacturer : **Beta-Calco**

File Name : **Lighting-Recessed-Betacalco-Verso.rfa**

Type Catalog File Name : **Lighting-Recessed-Betacalco-Verso.txt**

Family Category : **Lighting Fixtures**

Software : **Revit MEP 2011**  
*(to ensure content is available to largest number of users)*

IES : **Limited**

Host : **Face \***  
\* Face based (as opposed to ceiling or wall based) components can be recognized in both architectural and engineering revit project files

Pre-loaded Types\*\* : **820 8710 - Type A**  
**820 8712 - Type B**  
**820 8714 - Type C**  
**820 8718 - Type D**  
*( type catalog can be used to load more types)*  
\*\* Type names based on Verso Specification Code

Adjustable Parameters: **Visibility** (Yes/no for Types A to D)  
**Length & Width** (driven by Visibility)  
**Materials and Finishes**  
**Electrical & Photometrics**